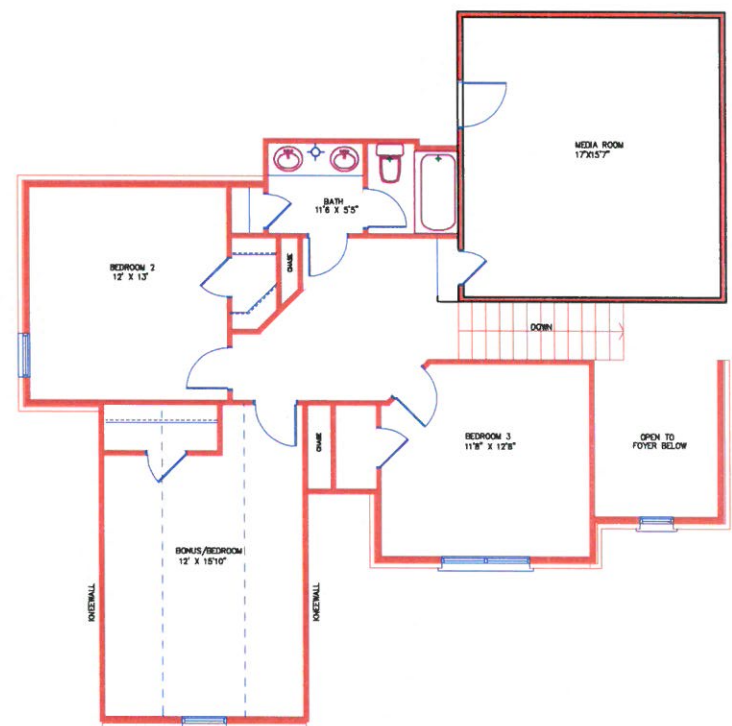








MADISON  
FIRST FLOOR  
2000 S.F. HEATED



MADISON  
SECOND FLOOR  
1117 S.F. HEATED





MADISON  
FIRST FLOOR  
2000 S.F. HEATED



MADISON  
SECOND FLOOR  
821 S.F. HEATED





## **Clark Family Homes**

PO Box 238 • Medina, TN 38355 • 731-783-1455

### **Plan Set 2 Allowances**

- Appliances**     **Jerry Cloud @ Coffman's**     **731-664-0900**  
\$1,538.70 Stainless package to include electric stove, dishwasher, and microwave.  
Overages will be paid directly to Coffman's.
- OR (Depending your plan specifications)
- \$3,204.70 Stainless Package to include double oven with gas cooktop,  
dishwasher, microwave. Overages will be paid directly to Coffman's.  
Your package is dependent on your house plan.
- Lighting**     **Deborah at Lowes in Milan**     **731-613-8665**  
\$1800. Overages will be paid to Clark Family Homes at closing.
- Brick**     **Jonathan Roland @ General Shale Brick**     **731-394-2292**  
\$295 per thousand in queen size     \$10.15 per bag on mortar
- Shelving**     **E & T Contracting**     **731-989-2470**  
You can call if you want to add to standard
- Mirrors**     **Kirkland's, Jackson, TN**  
\$150 Gift Card





## **Clark Family Homes**

PO Box 238 • Medina, TN 38355 • 731-783-1455

### **Madison Plan Spec Sheet**

- All brick home with 1 gable above dining room with vinyl shake
- Cedar shutters on 5 windows, 2 cedar columns on front, 2 aluminum columns on back
- Standard amount of sod/landscaping (840 yds of sod)
- Optional 3<sup>rd</sup> garage
- Optional media room
- Hardwood flooring in the entry, dining, living room, kitchen, and hallway
- Tile in all baths and laundry room
- Carpet in all bedrooms and on stairs
- Master tile shower in corner with soaker tub
- Fiberglass tub/shower units in spare baths up and down
- Standard granite or quartz countertops in kitchen
- Marble countertops in spare baths up and down
- Gas fireplace with tile front and raised hearth
- Gas heat/electric air
- Appliance package includes Maytag stainless electric range, dishwasher, and microwave
- Crown molding in entry, dining, living room, kitchen, hallway, and master bedroom and bathroom
- \$1,800.00 lighting budget
- Wainscoting in dining room
- 10 cable/phone jacks
- 9 can lights (4 in kitchen, 4 in master bedroom, 1 above master shower)
- 2 outside water faucets
- French doors from master bedroom to study
- 8' ceilings throughout (2 story ceiling in entry and living room)
- 2 electric 50-gallon water heaters
- Standard stainless 1 bowl, 50/50, or 60/40 kitchen sink
- Standard garage door with no glass inserts