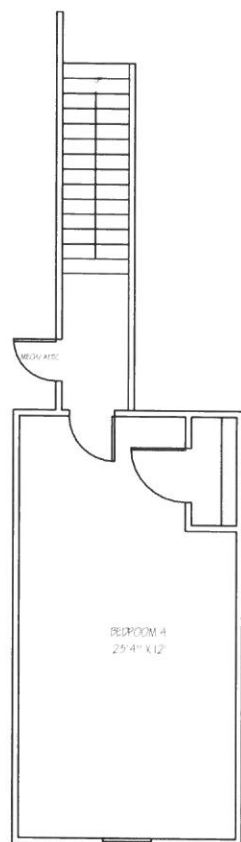
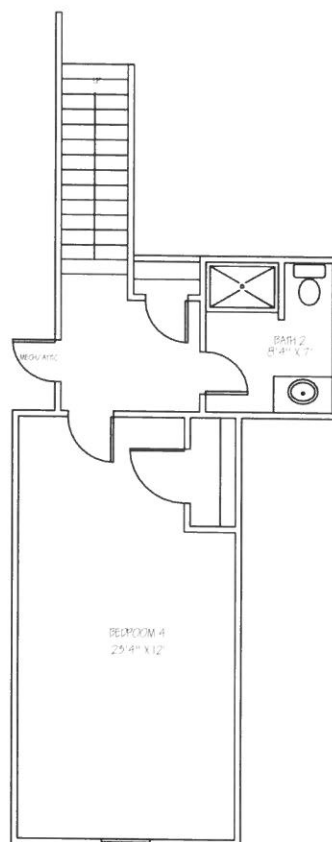


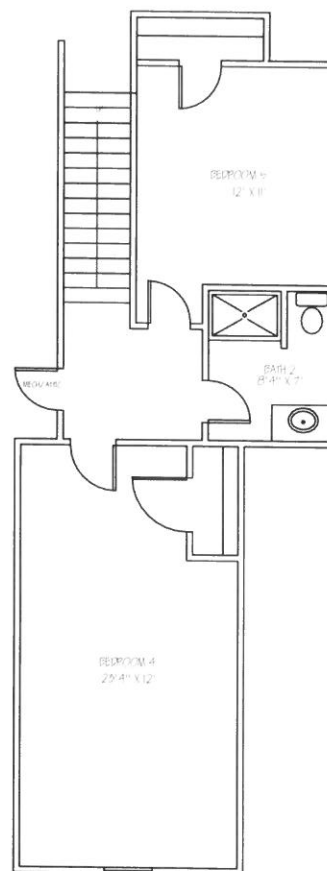
SOMERSET
FIRST FLOOR
1884 S.F. HEATED



SOMERSET
SECOND FLOOR
557 SF. HEATED
OPTION 1



SOMERSET
SECOND FLOOR
458 SF. HEATED
OPTION 2



SOMERSET
SECOND FLOOR
602 SF. HEATED
OPTION 3



Clark Family Homes

PO Box 238 • Medina, TN 38355 • 731-783-1455

Plan Set 2 Allowances

Appliances **Jerry Cloud @ Coffman's** **731-664-0900**
\$1,538.70 Stainless package to include electric stove, dishwasher, and microwave.
Overages will be paid directly to Coffman's.

OR (Depending your plan specifications)

\$3,204.70 Stainless Package to include double oven with gas cooktop,
dishwasher, microwave. Overages will be paid directly to Coffman's.
Your package is dependent on your house plan.

Lighting **Deborah at Lowes in Milan** **731-613-8665**
\$1800. Overages will be paid to Clark Family Homes at closing.

Brick **Jonathan Roland @ General Shale Brick** **731-394-2292**
\$295 per thousand in queen size \$10.15 per bag on mortar

Shelving **E & T Contracting** **731-989-2470**
You can call if you want to add to standard

Mirrors **Kirkland's, Jackson, TN**
\$150 Gift Card



Clark Family Homes

PO Box 238 • Medina, TN 38355 • 731-783-1455

Somerset Spec Sheet

- All brick home (stone or vinyl above eyebrow in arch or on bump out is an upgrade)
- Vinyl shutters on 6 windows, 2 aluminum columns on back porch (3 columns on stretched back porch)
- Standard amount of sod/landscaping (1100 sq. ft. concrete, 840 yds. sod)
- Hardwood in entry, living room, dining room, kitchen, and hallway
- Tile in all baths and laundry room
- Carpet in all bedrooms and on stairs
- 5' Fiberglass shower with door in master bath
- Fiberglass tub/shower unit in spare bath
- 3' Fiberglass shower with door in upstairs bath (if plan specifies)
- Standard granite or quartz in kitchen
- Marble countertops in baths
- Gas log fireplace
- Electric heat/air
- Appliance package includes Maytag stainless range/oven, dishwasher, and microwave
- \$1,800.00 lighting budget
- 10 cable/phone jacks
- 4 can lights in kitchen
- 2 outside water faucets
- 8' ceilings
- Electric 50-gallon water heater
- Standard stainless 1 bowl, 50/50, or 60/40 kitchen sink
- Standard garage door (glass and straps/handles are upgrades)
- 2 paint colors for walls/1 trim paint color for baseboards, crown, wainscoting, and mantle
- Standard White, Clay, or Beige windows