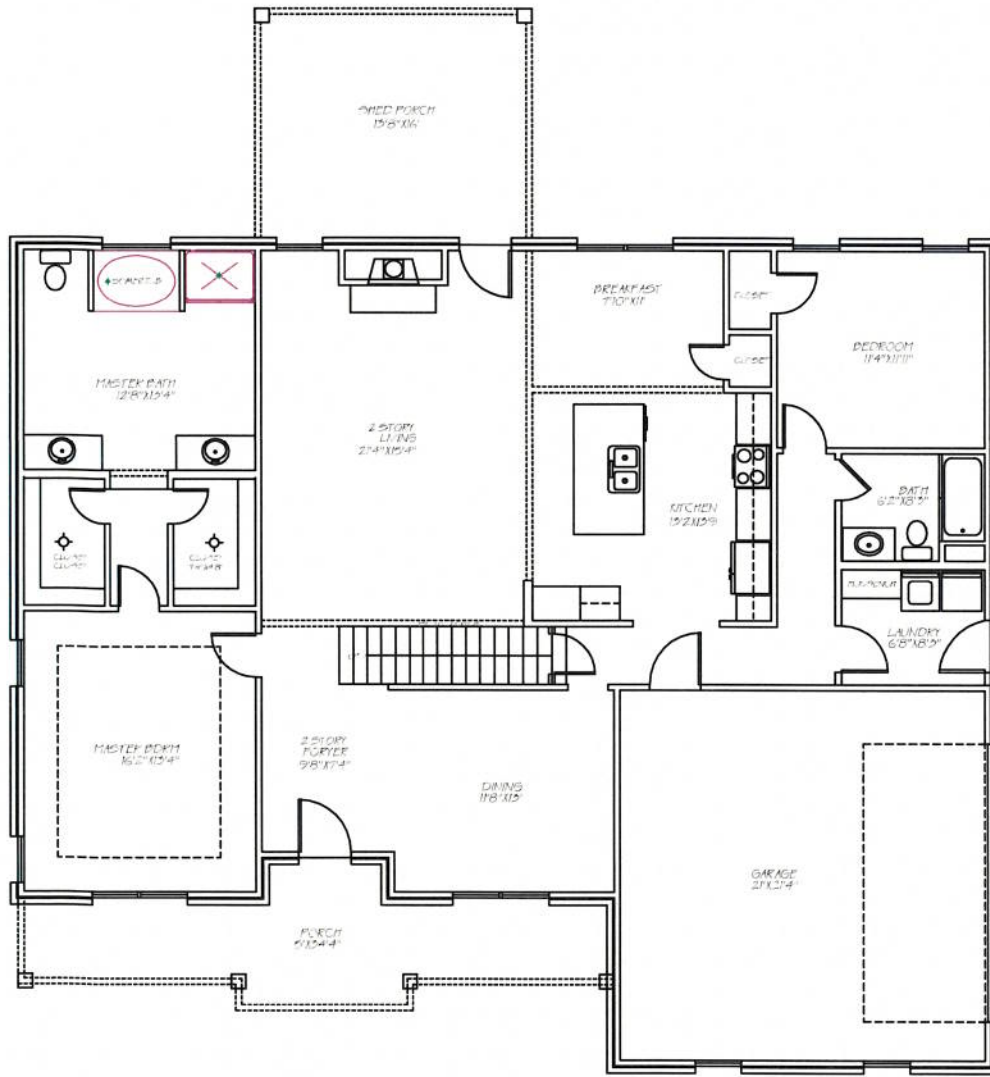


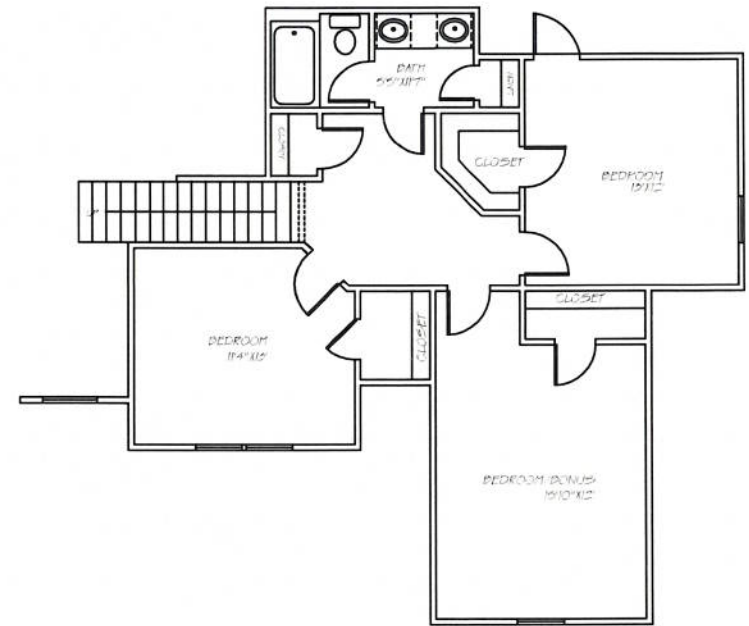


Callen





CALLLEN
1903 SF. HEATED



CALLLEN
809 SF. HEATED



Clark Family Homes

PO Box 238 • Medina, TN 38355 • 731-783-1455

Plan Set 2 Allowances

- Appliances** **Jerry Cloud @ Coffman's** **731-664-0900**
\$1,538.70 Stainless package to include electric stove, dishwasher, and microwave.
Overages will be paid directly to Coffman's.
- OR (Depending your plan specifications)
- \$3,204.70 Stainless Package to include double oven with gas cooktop,
dishwasher, microwave. Overages will be paid directly to Coffman's.
Your package is dependent on your house plan.
- Lighting** **Deborah at Lowes in Milan** **731-613-8665**
\$1800. Overages will be paid to Clark Family Homes at closing.
- Brick** **Jonathan Roland @ General Shale Brick** **731-394-2292**
\$295 per thousand in queen size \$10.15 per bag on mortar
- Shelving** **E & T Contracting** **731-989-2470**
You can call if you want to add to standard
- Mirrors** **Kirkland's, Jackson, TN**
\$150 Gift Card



Clark Family Homes

PO Box 238 • Medina, TN 38355 • 731-783-1455

Callen Plan Spec Sheet

- All brick home with 1 front porch gable in front of front door with vinyl shake
- Cedar shutters on 5 windows, 4 cedar columns on front, 2 aluminum columns on back
- Standard amount of sod/landscaping (840 yds of sod)
- Optional 3rd garage
- Optional media room
- Hardwood flooring in the entry, dining, living room, kitchen, and hallway
- Tile in all baths and laundry room
- Carpet in all bedrooms and on stairs
- Master tile shower in corner with soaker tub
- Fiberglass tub/shower units in spare baths up and down
- Standard granite or quartz countertops in kitchen
- Marble countertops in spare baths up and down
- Gas fireplace with tile front and raised hearth
- Gas heat/electric air
- Appliance package includes Maytag stainless electric range, dishwasher, and microwave
- Crown molding in entry, dining, living room, kitchen, hallway, and master bedroom and bathroom
- \$1,800.00 lighting budget
- Wainscoting in dining room
- 10 cable/phone jacks
- 9 can lights (4 in kitchen, 4 in master bedroom, 1 above master shower)
- 2 outside water faucets
- 8' ceilings throughout (2 story ceiling in entry and living room)
- 2 electric 50-gallon water heaters
- Standard stainless 1 bowl, 50/50, or 60/40 kitchen sink
- Standard garage door with no glass inserts